

At Riffa Views International School (RVIS), education goes beyond the classroom. We encourage **exploration**, **growth**, and **future readiness** through engaging academic programmes and a variety of extracurricular activities, creating an environment where students are challenged, supported, and inspired every day.



WHAT MAKES US UNIQUE?

RVIS is a **leading international school in Bahrain**, offering a truly international curriculum. As a **small, non-profit** school, we provide a **personalised learning experience** from Early Childhood through High School, combining **academic excellence with a strong sense of community**. Our agile approach to education, alongside respect for local culture, ensures all students can thrive.

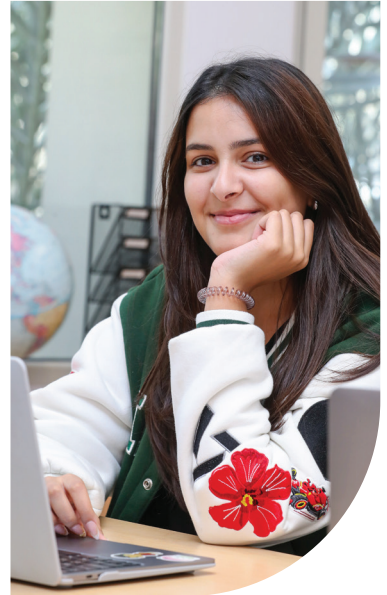
ACADEMIC PROGRAMME

Our academic program provides a **balanced, holistic education** that nurtures the intellectual, social, emotional, and **physical growth** of every student.

It emphasizes:

- **Conceptual understanding** and inquiry-based learning
- **Interdisciplinary connections** that apply knowledge in real-world contexts
- **Creativity, problem-solving, and collaboration** to develop critical thinking, communication, and self-management skills
- **Curiosity, resilience, and international mindedness**

Learning is framed through **global contexts across all IB programmes**, providing students with a **broader, more connected view of the world**. We monitor each student's growth through the **Zone of Proximal Development (ZPD)**, ensuring they are supported and challenged at the right level.

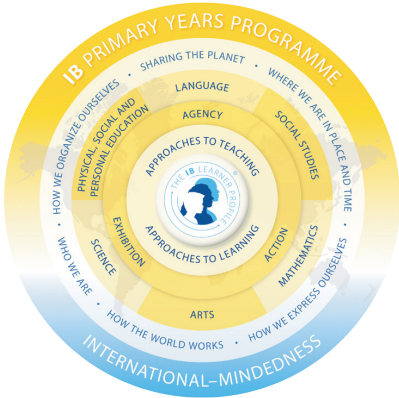


EARLY YEARS WITHIN THE PYP

Our Early Years (Nursery, Pre-Kindergarten, and Kindergarten) are an integral part of the **IB Primary Years Programme (PYP)**.

- Learning is **play-based, inquiry-driven, and hands-on**
- Focused on **literacy, numeracy, and social-emotional development**
- Encourages **exploration, creativity, and independence**
- Supports **student agency** through voice, choice, and ownership

This approach ensures a **smooth, confident transition** into the later stages of the PYP.

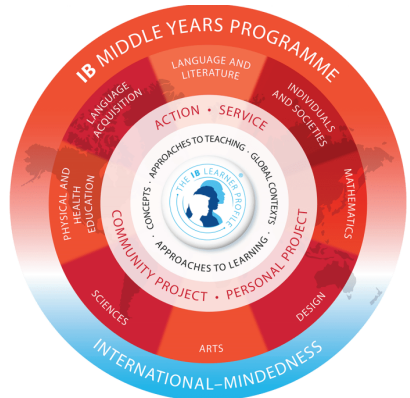


IB PRIMARY YEARS PROGRAMME (PYP)

The **PYP** is an inquiry-based framework for children aged 3–12 that develops **lifelong learners and globally minded citizens**. It is **student-centered and transdisciplinary**, using six global themes to connect traditional subjects.

IB MIDDLE YEARS PROGRAMME (MYP)

The **MYP** is designed for students aged 11–16, providing a **comprehensive, challenging curriculum** that connects knowledge to the real world.



- Broad education through **eight subject groups**
- Supports **holistic development**, integrating academic learning with essential skills like **critical thinking and communication**
- Emphasizes **inquiry-based learning, global contexts, and interdisciplinary understanding**



IB DIPLOMA PROGRAMME (IBDP)

The **IBDP** is a two-year academically rigorous program for students aged 16–19, preparing them for **university and a globalized world**.

- Students study **six subjects**, **Theory of Knowledge (TOK)**, **Creativity, Activity, Service (CAS)**, and the **Extended Essay (EE)**
- Develops **critical thinking**, **intercultural understanding**, and **international mindedness**
- **IB Certificate options** are available for students not pursuing the full Diploma



HIGH SCHOOL DIPLOMA PROGRAMME (HSD)

High School at RVIS offers a **personalised and challenging education**, with three pathways, including the **IB Diploma Programme**.

- Students gain **real-world experience** through internships, service projects, and leadership opportunities
- A wide range of activities develops **confidence, collaboration, and personal growth**
- Prepares students to **thrive at university and beyond**



ARABIC PROGRAMME

The Arabic programme is designed for **native and non-native speakers**, aligned with the **Bahrain Ministry of Education framework** and enriched with **modern teaching strategies**:

- **Native speakers:** Focus on fluency, advanced writing, and cultural understanding
- **Non-native speakers:** Develop skills through immersive activities in **grammar, vocabulary, and culture**
- Engaging activities include **songs, stories, calligraphy, poetry, and cultural festivals**
- Supports **IB Arabic A & B tracks**, preparing students for **bilingual diplomas**



STEAM EDUCATION

At RVIS, **STEAM (Science, Technology, Engineering, Arts, and Mathematics)** education:

- Encourages **innovation, design thinking, and problem-solving**
- Connects disciplines through **hands-on projects**
- Follows a **design cycle** to guide learning and innovation
- Develops **digital literacy and future-ready skills**
- Benefits from global partnerships, including **MIT MISTI**



THE INNOVATION HUB

Our **Innovation Hub** is a state-of-the-art facility where students:

- Explore and apply **STEAM knowledge**
- Engage in **creative problem-solving, robotics, AI, digital fabrication, and more**
- Prepare for **future careers in technology and design**

The space provides **real-world learning opportunities** and inspires students to **turn ideas into action**.



T: 1656-5000
E: admissions@rvis.edu.lb
www.rvis.edu.bh

